



# Smart Cloud Platform

To bring insights & intelligence  
for your enterprise data!

## Energy Studio Lounge

**elcontrol**<sup>®</sup>  
energy net

**SCHWEIZ**  
Rolf Muri AG  
Einsiedlerstrasse 533  
CH-8810 Horgen

Telefon: 044/727 99 00

E-Mail : [office@rolfmuri.ch](mailto:office@rolfmuri.ch)

**ESL**

# Energy Studio Lounge

ESL is an Energy, Process, & Power Re-analyzing software intended to help the users to monitor and analyze the process, power quality and energy consumption in any organization.

# ESL Modules

---



Communication Status



Trends



Dashboards & widgets



Alarms



Breaker Status



Reports

# Communication Status

---



## Data Transmission

Displays the communication status of all the connected gateways and metering sensors.



## Device availability

Displays if the connected devices are active, non-active or disabled.

# Gateway Status

Gateways Search 15 14 1 256 226 30

Block B Basement LT Room 1 10.41.84.101 682719063532	Block B Basement LT Room 2 10.41.84.102 6827190630DD	Block B Basement UPS Room 10.41.84.103 682719063142	UPS SNMP 10.41.84.163 502	Block A HT YARD 10.41.17.150 682719063115
Temp and Humidity 10.41.84.164 502	BLOCK B GF DC UPS Room 10.41.84.105 682719063489	BLOCK B 3F Lab & Elec Room 10.41.84.106 682719063173	BLOCK B 7F Cafeteria & Terrace 10.41.84.108 049162649046	Block A Basement LT Room 1 10.41.17.152 68271906310C
Block B - 1 GF Data Center and UPS Ro... 10.41.84.104 04916263E237	Block B GF 2F 3F Elec Room 10.41.84.107 6827190634A2	Block A Basement LT Room 2 10.41.17.151 68271905E9B2	Block A LT Raw Power Panel ALL Floor... 10.41.17.153 682719062E57	Block B Blue Star Chiller 10.41.84.161 502

Activate Windows  
Go to Settings to activate Windows.

Elcontrol Energy Net Srl Active Alarms Inactive Gateway Inactive Sensors Need help?

# Sensor Status

Sensors

Search

15 14 1

256 226 30

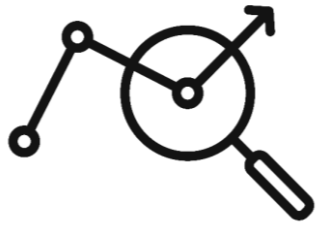
Filter by: All Sensors

EM Block B Basement Main LT Panel Income EN 6400NG	90	EPC Block B Kitchen & AG Lab DI EPC Custom DI	78	Alpha Block B Basement Main LT Panel DC 5 Alpha Plus & Omega Series	80	EPC Block B Basement Main LT Panel DC 50 EPC Custom DI	81	EM Block B Basement Main LT Panel L&R Pa EM 6438	82
EPC Block B Basement Main LT Panel L&R P EPC Custom DI	83	EM Block B Basement Main LT Panel Spare EM 6438	84	EPC Block B Basement Main LT Panel Spare EPC Custom DI	86	EM Block B Basement Main LT Panel AC Chi EM 6438	87	EPC Block B Basement Main LT Panel Income EPC Custom DI	91
EM Block B Basement Main LT Panel DC 50C EN 8400 N	79	EM Block B Basement Main LT Panel 900 KV EN 8400 N	92	EPC Block B Basement Main LT Panel 900 K EPC Custom DI	93	EM Block B Basement Main LT Panel 3rd Flo EN 8400 N	94	Alpha Block B Basement Main LT Panel 3rd f Alpha Plus & Omega Series	95
EPC Block B Basement Main LT Panel 3rd Fl EPC Custom DI	96	EPC Block B Basement Main LT Panel Spare EPC Custom DI	98	EPC Block B Basement Main LT Panel O/P tc EPC Custom DI	99	EPC Block B Basement LT Room DG Income EPC Custom DI	101	EPC Block B Basement LT Room DG Income EPC Custom DI	103
EPC Block B Basement LT Room DG SYNC- / EPC Custom DI	104	EPC Block B Basement LT Room 900 KVAR / EPC Custom DI	105	iELR Block B Basement Main LT Panel Incorr PROK	4	iELR Block B Basement Main LT Panel 3rd Fl PROK	6	EM & DI Block B Basement LT Room Source EN 8400 N	106
Alpha Block B Basement LT Room Source 3&4 Alpha Plus & Omega Series	107	iELR Block B Basement LT Room Source 3&4 Alpha Plus & Omega Series	108	EM Block B Basement LT Room Source 3&4 EN 8400 N	112	EPC Block B Basement LT Room Source 3&4 EPC Custom DI	113	EM Block B Basement LT Room Source 3&4 EN 8400 N	114
EPC Block B Basement LT Room Source 3&4 EPC Custom DI	115	EM Block B Basement LT Room Source 3&4 EN 8400 N	116	EPC Block B Basement LT Room Source 3&4 EPC Custom DI	117	EM & DI Block B Basement LT Room Source EN 8400 N	118	EM Block B Basement LT Room Source 3&4 EN 8400 N	119
EPC Block B Basement LT Room Source 3&4 EPC Custom DI	120	EM & DI Block B Basement LT Room Source EN 8400 N	121	EM Block B Basement LT Room Source 3&4 EN 8400 N	122	EPC Block B Basement LT Room Source 3&4 EPC Custom DI	123	EPC Block B Spare ACB 1250A EPC Custom DI	125
EPC Block B Basement LT Room ACB Chang EPC Custom DI	126	EM Block B Basement B Block UPS panel Inc EM 6400H	129	EPC Block B Basement B Block UPS panel In EPC Custom DI	130	EPC Block B Basement LAB UPS panel sourc EPC Custom DI	131	EPC Block B Basement LAB UPS panel I/P s EPC Custom DI	132
EPC Block B Basement LAB UPS panel I/P s EPC Custom DI	133	EM Block B Basement B Block LAB UPS pan Little Genius Plus	134	EPC Block B Basement UPS Output Panel In EPC Custom DI	135	EPC Block B Basement UPS Output Panel Sp EPC Custom DI	136	EPC Block B Outgoing to 3rd floor LAB SUB I EPC Custom DI	137
EM & DI Block B MUX room ups I/P Source-1 EN 8400 N	138	EM & DI Block B MUX room ups I/P Source-2 EN 8400 N	139	EM & DI Block B MUX room 20 KVA ups I/P - EN 8400 N	141	EM & DI Block B MUX room 20 KVA ups I/P - EN 8400 N	142	EM & DI Block B Basement MUX room MCCI EN 8400 N	145

Elcontrol Energy Net Srl

Active Alarms 0+ Inactive Gateway Inactive Sensors 1 Need help?

# Trends



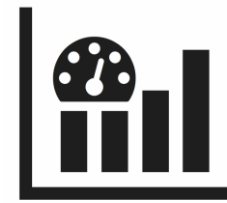
## Easy visualization

Data are shown in visual patterns that are very easy to understand and take a corrective action.



## Overshoots at a glance

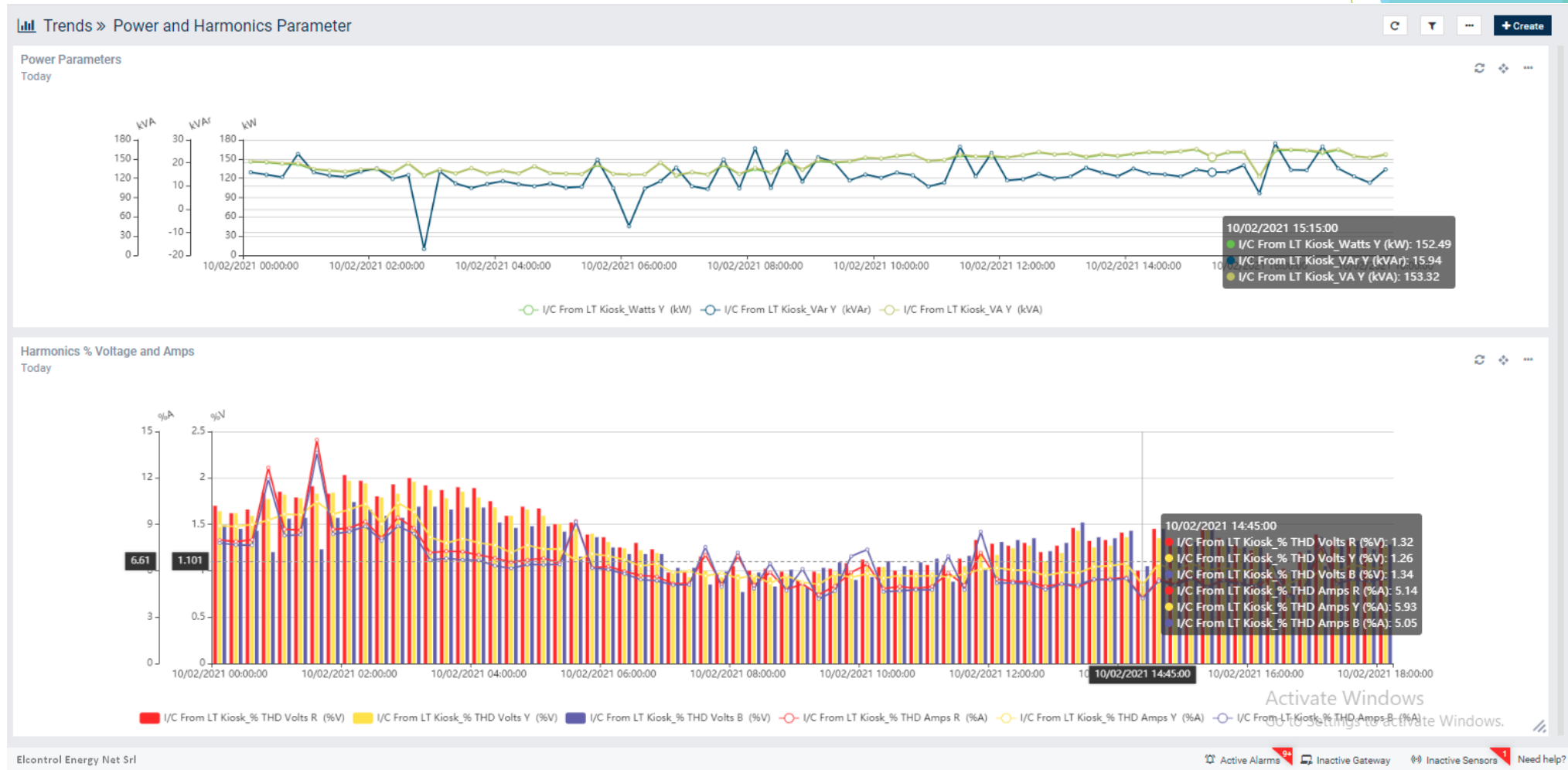
Quick selection and viewing of the parameters that has been overshoot from the defined minimum and maximum values.



## Benchmarking & Control

Easy identify the non-linear loads, set threshold limits and define benchmarks.

# Trend Widget





# Dashboards & Widgets

---



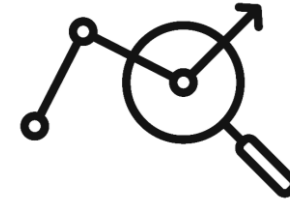
## Real-time insights

View the live feed from the sensors or the previously logged data as per the user selection.



## Benchmarking & Control

Easy identify the non-linear loads, set threshold limits and define benchmarks.

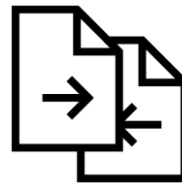


## User's choice of visualization

Features the ability to create widgets from a range of choices like bar chart, line, gauge, table or pie chart for the most apt data visualization.

## Upto **8** widgets

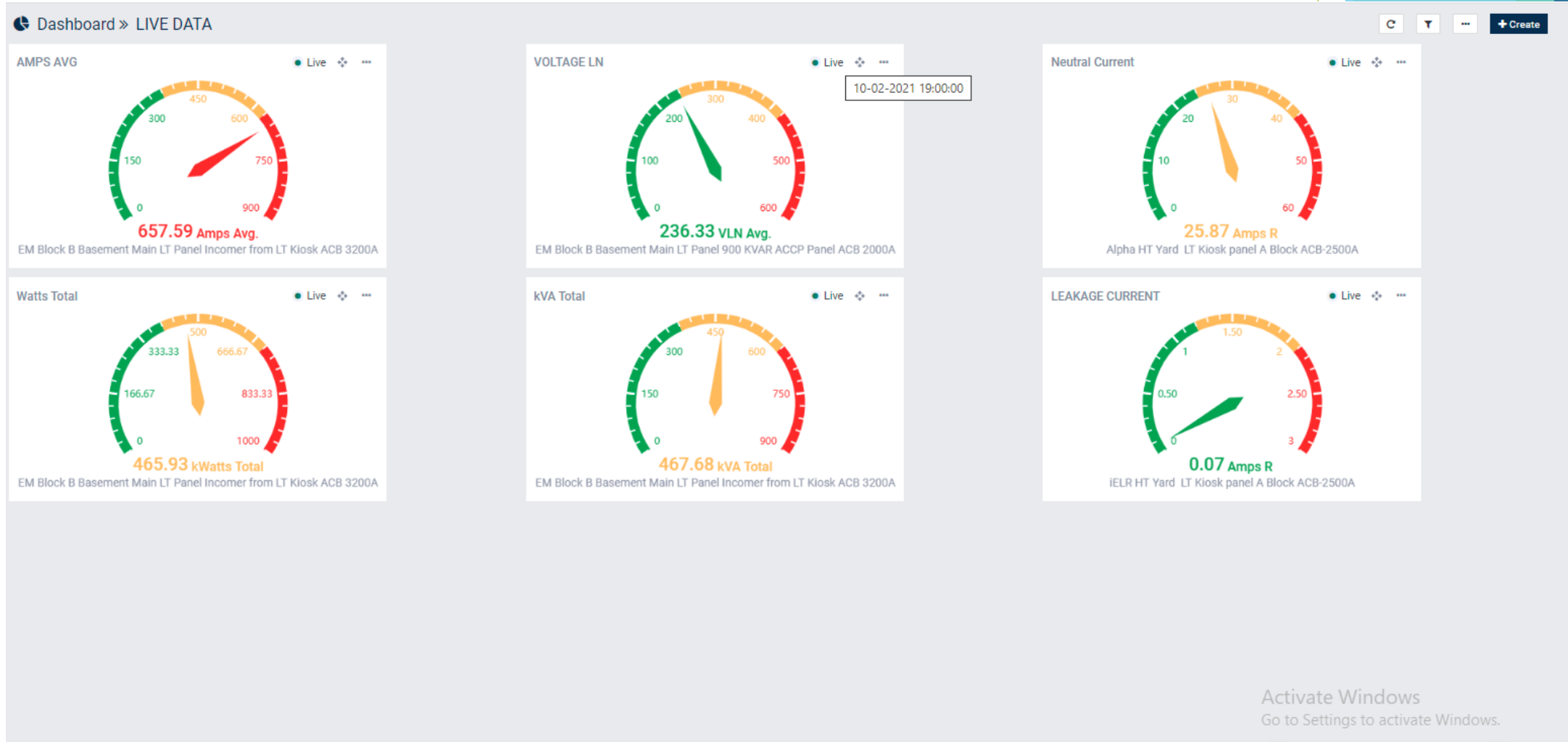
User can associate up to 8 widgets in a single dashboard.



## Effortless data comparisons

The Common filter helps the user to easily compare and verify data with the least effort.

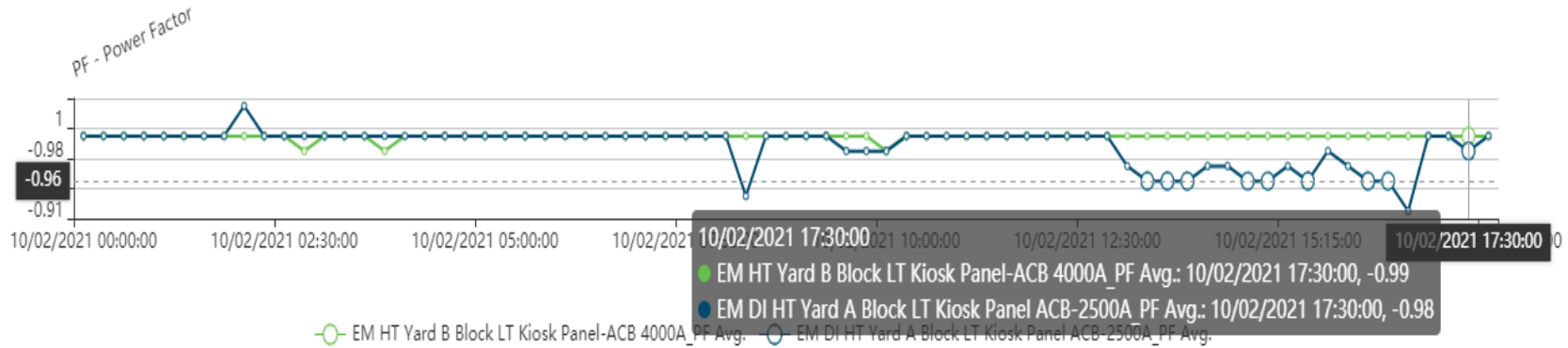
# Live Dashboard



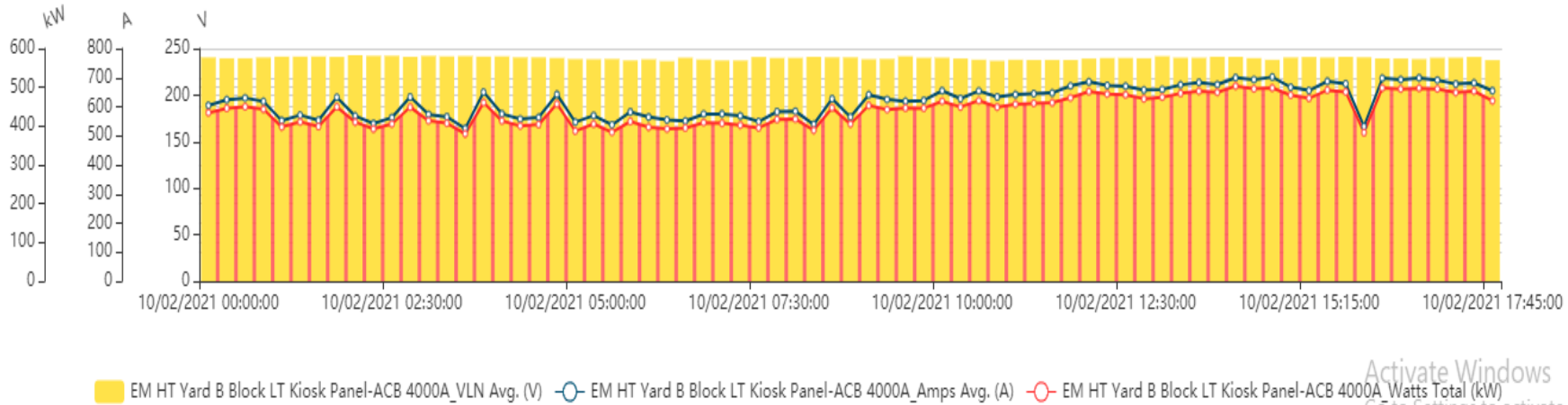
# Energy Monitoring Dashboard



PF Chart  
Today



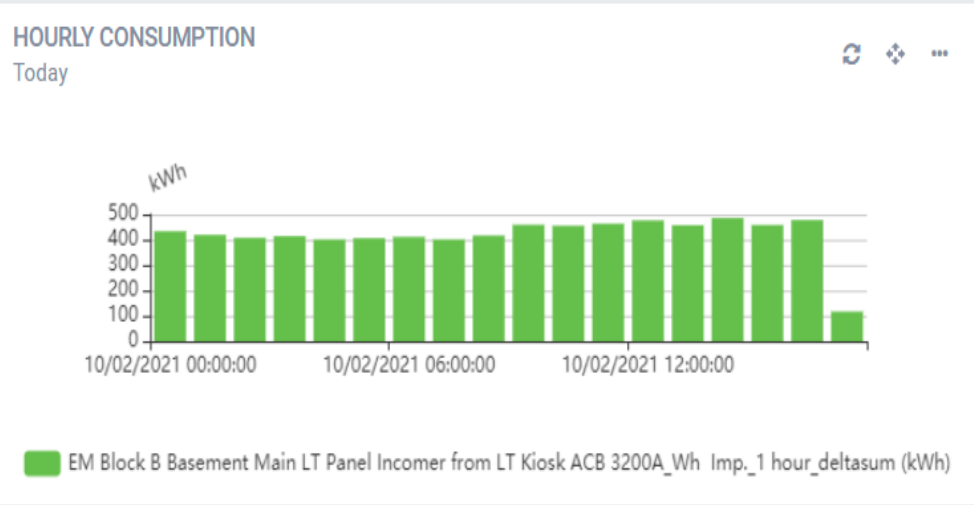
Volts & Ampere & Watts  
Today



Activate Windows  
Go to Settings to activate Windows.

**Kilo watts** ● Live

EM Block B Basement Main LT P...  
**472.00 Kilowatts**



**Voltage**  
Today

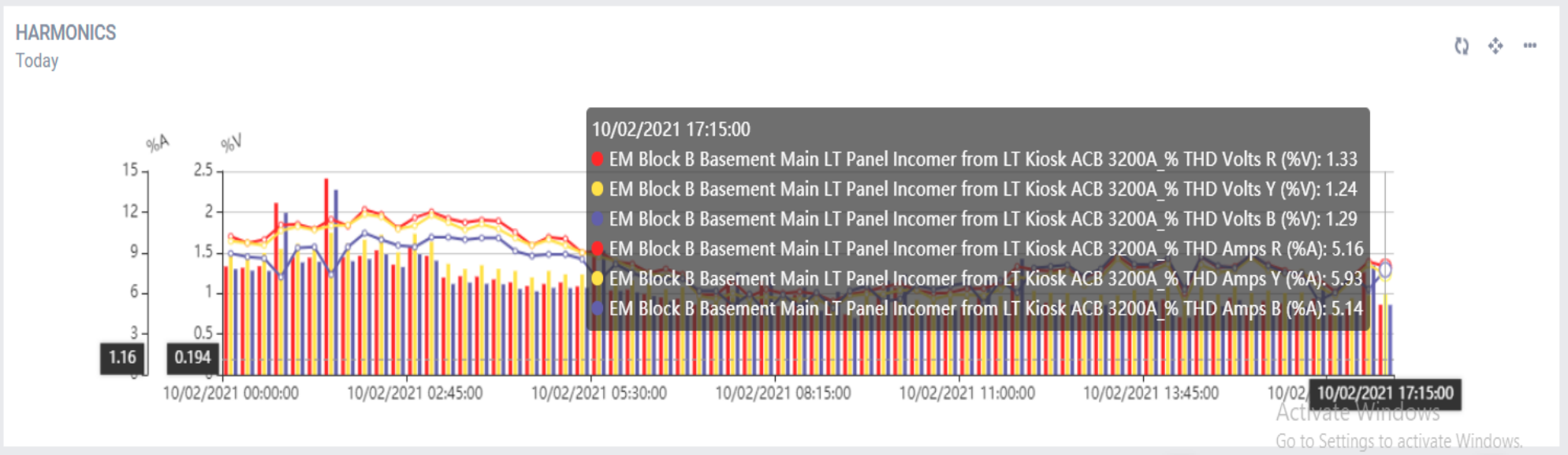
**415.39 VLL Avg.**

**Amps** ● Live

EM Block B Basement Main LT P...  
**656.86 amps**

**KiloWatts**  
Last 15 minutes

**497.4 kW**



# Common Filter Option



# Alarms

---



## Configurable alert levels

Generates alarms for the when the configured threshold limits are exceeded.



## Real-time alerts

Instants pop-up alerts on the dashboard to help you avert a possible mishap.



## Alerts on-the-go

Email and SMS alerts for a configured user group or for an individual user.



## Alert prioritization

Option to define the priority level of an alert.



## Dedicated acknowledgement

Acknowledge page for the generated alarms to clear them off.

## Alert Notifications List



High  
336



Medium  
2






Low  
318

Asset	Alert Name	Type	Priority	Status	Acknowledge	Tag name	Asset Status	Set Value	Triggered value	Triggered Time	Reset Time
EM DI Block A Baseme	Status ON DI2	Alarm	High	Active	ACK	Status On/OFF - DI 1	1	1		2021-01-30 17:04:12	
EM DI Block A Baseme	Status ON DI2	Alarm	High	Active	ACK	Status On/OFF - DI 1	1	1		2021-01-30 17:04:09	
EM DI Block A Baseme	Status ON DI2	Alarm	High	Active	ACK	Status On/OFF - DI 1	1	1		2021-01-30 17:04:07	
EM DI HT Yard A Block	Status ON DI2	Alarm	High	Active	ACK	Status On/OFF - DI 1	1	1		2021-01-30 17:04:05	
Block A Basement LT F	Status ON DI2	Alarm	High	Active	ACK	Status On/OFF - DI 1	1	1		2021-01-30 17:04:02	
HT Yard B block LT Kio	Status ON DI2	Alarm	High	Active	ACK	Status On/OFF - DI 1	1	1		2021-01-30 17:04:00	
Block B 3rd Floor Sub U	Status ON DI4	Alarm	High	Active	ACK	Status On/OFF - DI 3	1	1		2021-01-30 17:03:57	
Block B 3rd Floor Sub U	Status ON DI4	Alarm	High	Active	ACK	Status On/OFF - DI 3	1	1		2021-01-30 17:03:55	
Block B 3rd Floor Sub U	Status ON DI4	Alarm	High	Active	ACK	Status On/OFF - DI 3	1	1		2021-01-30 17:03:52	
Block B 3rd Floor Elect	Status ON DI4	Alarm	High	Active	ACK	Status On/OFF - DI 3	1	1		2021-01-30 17:03:49	



Alert Notifications List

 High 336
  Medium 2
  Low 318

Asset	Alert Name	Type	Priority	Status	Acknowledge	Tag	Time	Reset Time
EM DI Block A Baseme	Status ON DI2	Alarm	High	Active	ACK		17:04:12	
EM DI Block A Baseme	Status ON DI2	Alarm	High	Active	ACK		17:04:09	
EM DI Block A Baseme	Status ON DI2	Alarm	High	Active	ACK		17:04:07	
EM DI HT Yard A Block	Status ON DI2	Alarm	High	Active	ACK		17:04:05	
Block A Basement LT F	Status ON DI2	Alarm	High	Active	ACK		17:04:02	
HT Yard B block LT Kio	Status ON DI2	Alarm	High	Active	ACK		17:04:00	
Block B 3rd Floor Sub U	Status ON DI4	Alarm	High	Active	ACK		17:03:57	
Block B 3rd Floor Sub U	Status ON DI4	Alarm	High	Active	ACK		17:03:55	
Block B 3rd Floor Sub U	Status ON DI4	Alarm	High	Active	ACK		17:03:52	
Block B 3rd Floor Elect	Status ON DI4	Alarm	High	Active	ACK		17:03:49	

### Acknowledge Form ✕

---

**Asset** EM DI Block A Basement LT Room EB Main I/C ACB 2500A

**Alert Name** Status ON DI2

**Type** Alarm

**Priority** ▲ High

**Status** Active

**Tag name** Status On/OFF - DI 1

**Asset Status**

**Set Value** 1

**Triggered value** 1

**Triggered Time** 2021-01-30 17:04:09

**Reset Time**


---

ACK
Close

Activate Windows  
Go to Settings to activate Windows.

## Alert Notifications List

✓ Acknowledged Successfully

 High  
High: 336
  Medium  
2
  Low  
318

Asset	Alert Name	Type	Priority	Status	Acknowledge	Tag name	Asset Status	Set Value	Triggered value	Triggered Time	Reset Time
EM DI Block A Baseme	Status ON DI2	Alarm	High	Active	ACK	Status On/OFF - DI 1		1	1	2021-01-30 17:04:12	
EM DI Block A Baseme	Status ON DI2	Alarm	High	Active	ACK	Status On/OFF - DI 1		1	1	2021-01-30 17:04:09	
EM DI Block A Baseme	Status ON DI2	Alarm	High	Active	ACK	Status On/OFF - DI 1		1	1	2021-01-30 17:04:07	
EM DI HT Yard A Block	Status ON DI2	Alarm	High	Active	ACK	Status On/OFF - DI 1		1	1	2021-01-30 17:04:05	
Block A Basement LT F	Status ON DI2	Alarm	High	Active	ACK	Status On/OFF - DI 1		1	1	2021-01-30 17:04:02	
HT Yard B block LT Kio	Status ON DI2	Alarm	High	Active	ACK	Status On/OFF - DI 1		1	1	2021-01-30 17:04:00	
Block B 3rd Floor Sub U	Status ON DI4	Alarm	High	Active	ACK	Status On/OFF - DI 3		1	1	2021-01-30 17:03:57	
Block B 3rd Floor Sub U	Status ON DI4	Alarm	High	Active	ACK	Status On/OFF - DI 3		1	1	2021-01-30 17:03:55	
Block B 3rd Floor Sub U	Status ON DI4	Alarm	High	Active	ACK	Status On/OFF - DI 3		1	1	2021-01-30 17:03:52	
Block B 3rd Floor Elect	Status ON DI4	Alarm	High	Active	ACK	Status On/OFF - DI 3		1	1	2021-01-30 17:03:49	

# Reports

---

- **Log reports** - multi-device, multi-parameters report.
- **Selectable time reports** - 15 min, 30 min, hourly, monthly, weekly, and daily reports.
- **Alarm reports** - With user login acknowledgement.
- **Status reports** - With user login acknowledgement.
- **Other reports** - Average PF report, Shift report, TOD report, Groupwise report, Power outage report.
- **Report scheduling** - Scheduling of report on email for user work group or for individual login.

Reports » CONSUMPTION REPORT

⌂ ... + Create

Consumption Report

This month

🔄 ...

TimeStamp	EM Block B Basement Main LT Panel Incomer from LT Kiosk ACB 3200A_Wh Imp_daily deltasum (kWh)	EM Block B Basement Main LT Panel L&R Panel ACB 1000A_Wh Imp_daily deltasum (kWh)	EM Block B Basement Main LT Panel Spare_Wh Imp_daily deltasum (kWh)	EM Block B Basement Main LT Panel AC Chiller ACB 1000A_Wh Imp_daily deltasum (kWh)	EM Block B Basement Main LT Panel DC 500KVA Isolation Transformer I/P ACB 1250A_Wh Imp_daily deltasum (kWh)	EM Block B Basement Main LT Panel 3rd Floor ACB Change Over Panel UPS I/P ACB 1600A_Wh Imp_daily deltasum (kWh)	EM Block B Basement LT Room DG Incomer -2 ACB 1250A_Wh Imp_daily deltasum (kWh)	EM Block B Basement LT Room DG Incomer -1 ACB 1250A_Wh Imp_daily deltasum (kWh)	EM DI Block B Basement LT Room Source 3 and 4 Panel From A block I/C 1 ACB 2500A_Wh Imp_daily deltasum (kWh)	EM Block B Basement LT Room Source 3&4 panel Chiller Panel O/G source- 2 ACB 1000A_Wh Imp_daily deltasum (kWh)	EM HT Yard B Block LT Kiosk Panel-ACB 4000A_Wh Imp_daily deltasum (kWh)	EM DI HT Yard A Block LT Kiosk Panel ACB- 2500A_Wh Imp_daily deltasum (kWh)
01/02/2021 00:00:00	10824.5	1942.78		2499.84	2303.68	2948.7					10237.7	2797.73
02/02/2021 00:00:00	10703.5	1851.78		2444.03	2303.71	2946.75					9423.04	3004.35
03/02/2021 00:00:00	11007	1981.18		2588.03	2302.05	2950.18					10362.11	3292.03
04/02/2021 00:00:00	10318	1853.44		2286.85	2301.73	2951.9	338.95	0.01	0		9807.17	2780.86
05/02/2021 00:00:00	10708.5	1947.52		2362.88	2304.42	2947.68					10190.08	2764.61
06/02/2021 00:00:00	10737	1899.9		2377.86	2302.02	2947.71					9950.53	2545.34
07/02/2021 00:00:00	10557.5	1842.94		2311.04	2302.78	2949.76					9243.01	2492.99
08/02/2021 00:00:00	10236.5	1900.16		1908.99	2302.98	2947.78					7943.49	2805.38
09/02/2021 00:00:00	10654.5	1893.25		2355.07	2303.57	2948.61					9552.45	2952.22
10/02/2021 00:00:00	7927.5	1428.35		1671.81	1723.71	2222.43		0.03	0.01		7578.5	2244.22

AVG PF Report

Today



Asset Name	Wh Imp. Opening Reading	Wh Imp. Closing Reading	Wh Imp. Consumption	VAh Imp. Opening Reading	VAh Imp. Closing Reading	VAh Imp. Consumption	Average PF
EM Block B Basement Main LT ...	6783403	6791330.5	7927.5	6906166	6914141.5	7975.5	0.99
EM HT Yard B Block LT Kiosk Pa...	1012038.98	1019617.47	7578.5	1023058.24	1030758.59	7700.35	0.98
EM DI HT Yard A Block LT Kiosk...	367851.42	370095.65	2244.22	379107.68	381445.6	2337.92	0.96

ALARM

Previous month

Date and Time	Asset Name	Parameter	Reading	Threshold	Ack By	Ack Time
2021-01-19 17:11:54	EM HT Yard B Block LT Kiosk Panel-ACB 4000A	Amps Avg.	633.08	800	jithin	2021-01-19 17:12:05
2021-01-19 17:17:17	EM HT Yard B Block LT Kiosk Panel-ACB 4000A	Amps Avg.	651.94	800	jithin	2021-01-19 17:18:14
2021-01-19 17:19:17	EM HT Yard B Block LT Kiosk Panel-ACB 4000A	Amps Avg.	650.24	800	jithin	2021-01-19 17:20:31
2021-01-19 17:23:14	EM HT Yard B Block LT Kiosk Panel-ACB 4000A	Amps Avg.	665.68	800	jithin	2021-01-19 17:23:27
2021-01-19 17:25:19	EM HT Yard B Block LT Kiosk Panel-ACB 4000A	Amps Avg.	630.64	400	jithin	2021-01-19 17:26:07
2021-01-19 17:34:18	EM HT Yard B Block LT Kiosk Panel-ACB 4000A	Amps Avg.	660.82	800	jithin	2021-01-19 17:39:17
2021-01-19 17:36:10	EM HT Yard B Block LT Kiosk Panel-ACB 4000A	Amps Avg.	648.02	400	jithin	2021-01-19 17:39:19
2021-01-19 17:37:19	EM HT Yard B Block LT Kiosk Panel-ACB 4000A	Amps Avg.	658.84	800	jithin	2021-01-19 17:39:21
2021-01-19 17:38:15	EM HT Yard B Block LT Kiosk Panel-ACB 4000A	Amps Avg.	639.56	400	jithin	2021-01-19 17:39:23
2021-01-19 18:55:19	EM HT Yard B Block LT Kiosk Panel-ACB 4000A	Amps Avg.	583.47	400		
2021-01-19 23:45:11	EM HT Yard B Block LT Kiosk Panel-ACB 4000A	Amps Avg.	590.2	400		
2021-01-20 00:37:14	EM HT Yard B Block LT Kiosk Panel-ACB 4000A	Amps Avg.	597.8	400		
2021-01-20 00:46:13	EM HT Yard B Block LT Kiosk Panel-ACB 4000A	Amps Avg.	596.65	400		
2021-01-20 01:08:16	EM HT Yard B Block LT Kiosk Panel-ACB 4000A	Amps Avg.	591.27	400		

Activate Windows  
Go to Settings to activate Windows.

# Thank You

**SCHWEIZ**  
Rolf Muri AG  
Einsiedlerstrasse 533  
CH-8810 Horgen

Telefon: 044/727 99 00

E-Mail : [office@rolfmuri.ch](mailto:office@rolfmuri.ch)